

SINFONIA

Durata circa 6'25"

Amilcare Ponchielli (1834-1886) Op. 106

Versione storica a cura di Emiliano Gusperti

Andante un poco mosso

Tamburo

Grancassa

ff

6
5-10
6

11

Cassa sola

ff cresc.

3
13-15
3

(pp)

Allegro vivo

5
18-22
5

2
23-24
2

deciso assai

ff

ff

29

4
33-36
4

ff

3
38-40
3

2
43-44
2

5
46-50
5

51

3
54-56
3

11
58-68
11

69

69 *pp cresc.* *pp cresc.* *ff*

76

76

21 82-102 21 *ppp assai* 9 106-114 9

115

115 *pp*

121

121 *pp cresc.*

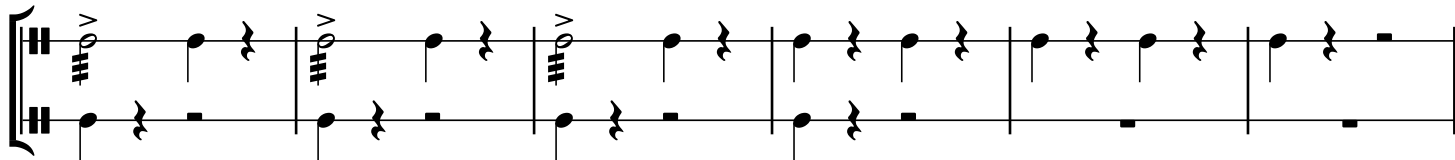
127

127 *ff* *tutta forza*

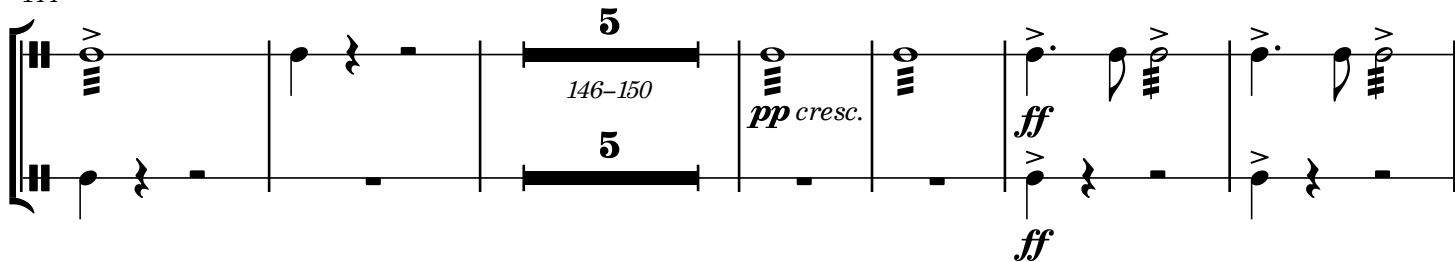
133

133

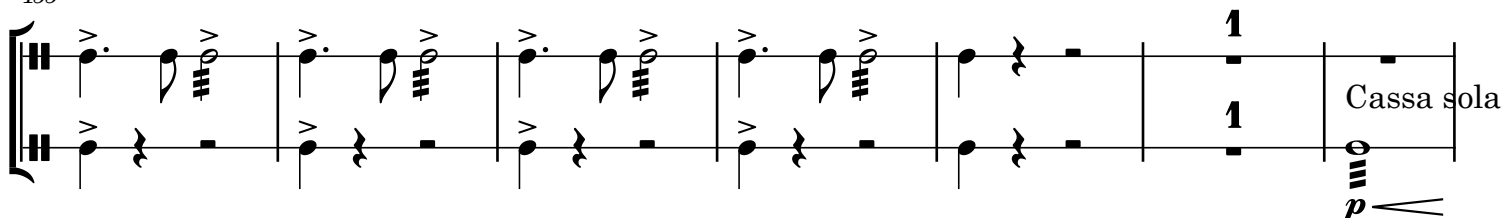
138



144

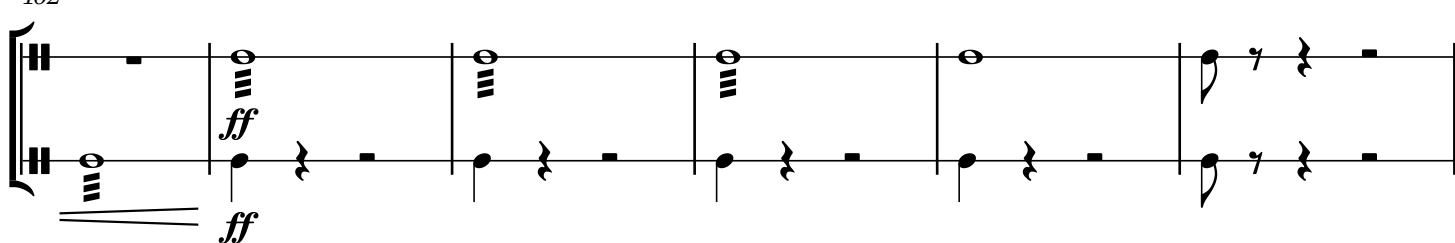


155

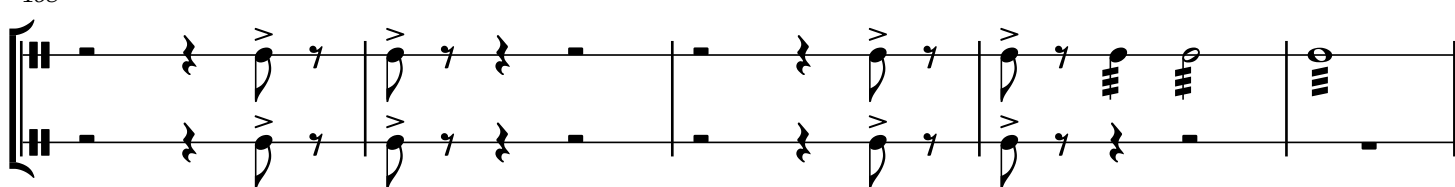


Cassa sola

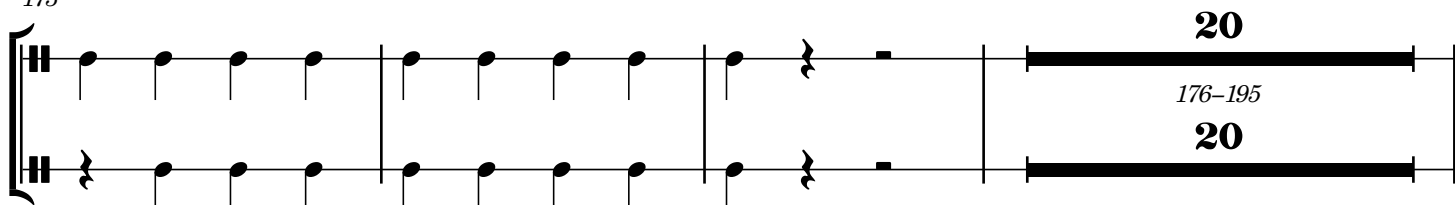
162



168



173



196

ff

202

ff

deciso assai

7

204-210

7

ff

214

3

220-222

3

ff

3

224-226

3

228-230

3

(*f*)

23

232-254

23

Maggiore

31

255-285

31

p

1

1

288

293

(*cresc.*)

298

ff

f

304

Example 304 is a single melodic line on a five-line staff. The notation includes various note values (quarter, eighth, and sixteenth notes), rests, and dynamic markings such as 'p' (piano) and 'f' (forte). The piece concludes with a double bar line and repeat dots.

310

326

326

327

328

329

330

331

Measures 331-336. The score is for a drum set, indicated by the double bar line with two vertical lines. The notation shows a series of eighth notes and rests, with a forte (*ff*) dynamic marking at the beginning and a crescendo marking (*(ff)*) in measure 333.

337

Measures 337-340. The score continues with eighth notes and rests, featuring a series of accents (>) over the notes.

341

Measures 341-344. The score continues with eighth notes and rests, featuring a series of accents (>) over the notes.

345

Measures 345-351. The score continues with eighth notes and rests, featuring a series of accents (>) over the notes. A forte (*ff*) dynamic marking is present at the beginning.

352

Measures 352-356. The score continues with eighth notes and rests, featuring a series of accents (>) over the notes.

357

Measures 357-360. The score continues with eighth notes and rests, featuring a series of accents (>) over the notes. The piece concludes with a double bar line.